

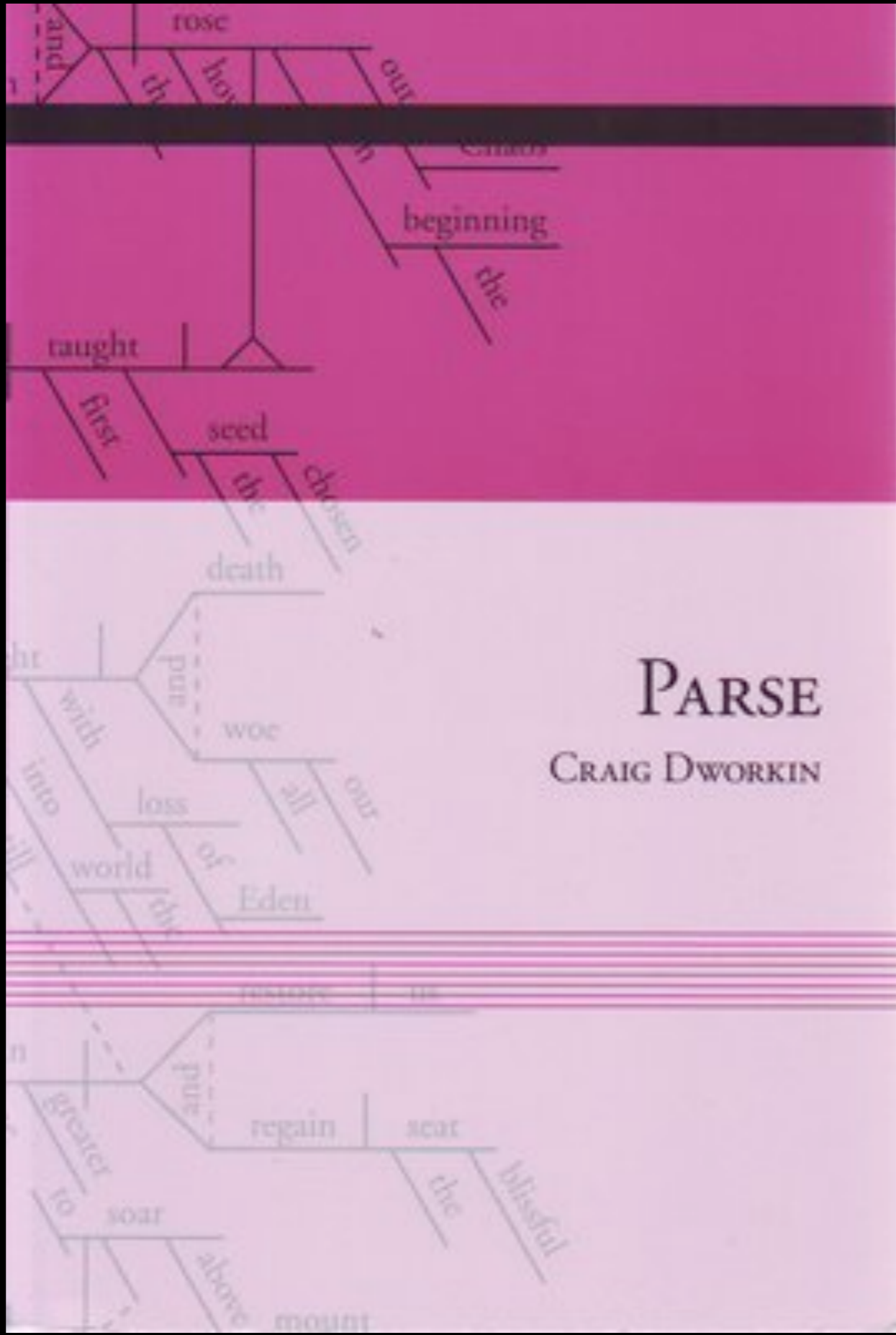
PARSE

We could even say that, online, we parse text—a binary process of sorting language—more than we read it to comprehend all the information passing before our eyes.

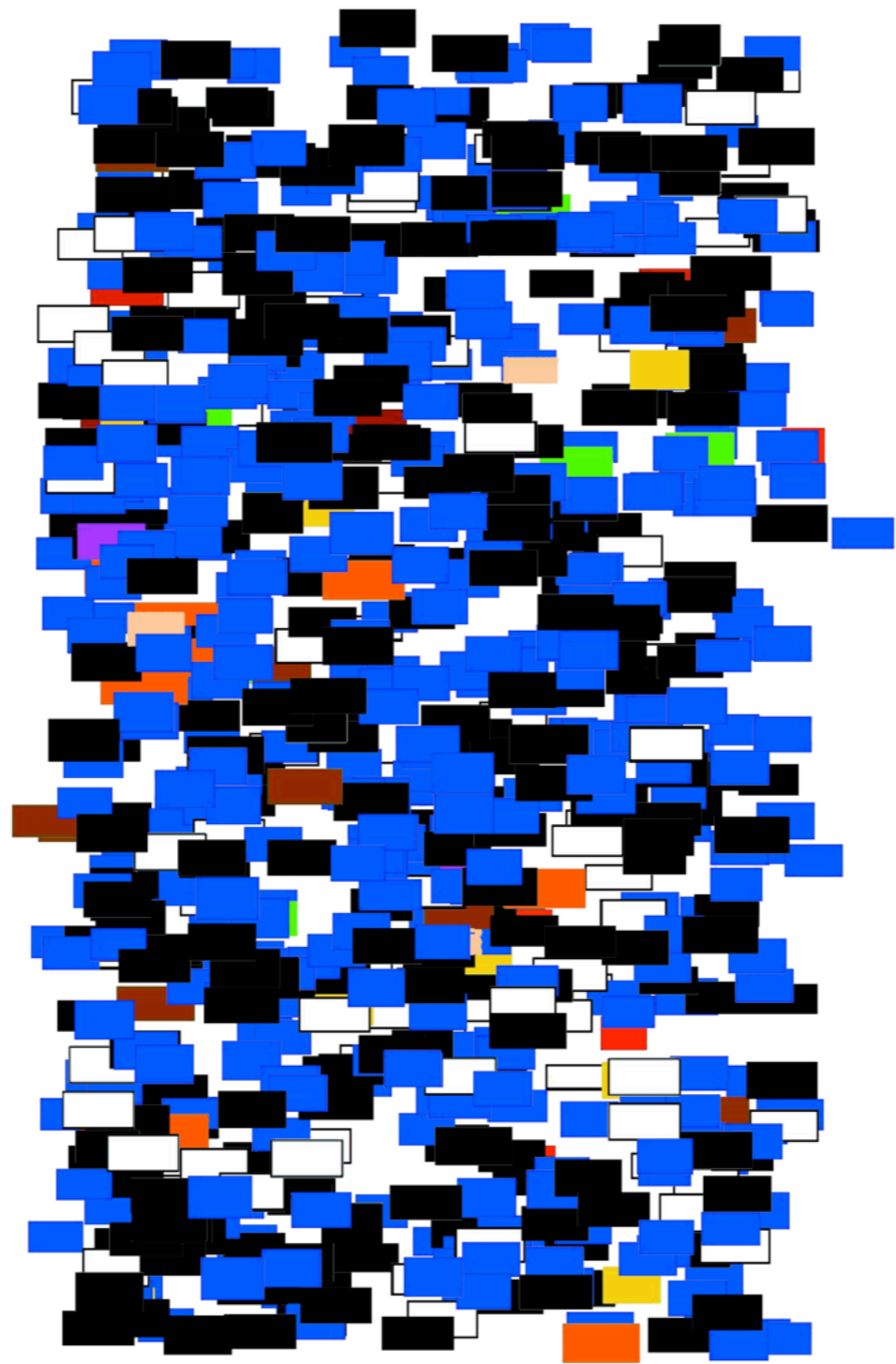
-Kenneth Goldsmith

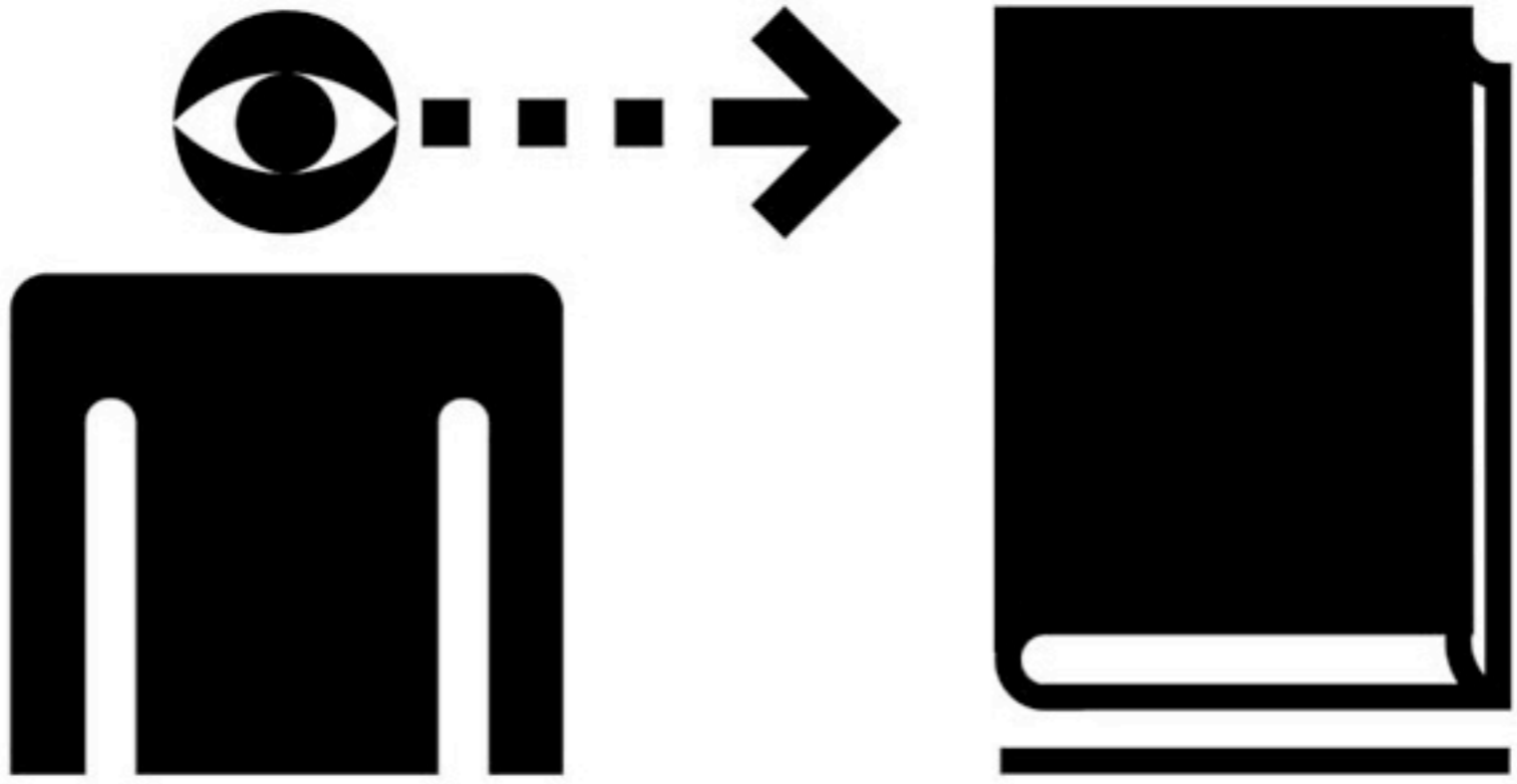
parse: To examine closely or subject to detailed analysis, especially by breaking up into components

parse: To break (a sentence) down into its component parts of speech with an explanation of the form, function, and syntactical relationship of each part.



PARSE
CRAIG DWORKIN





♥ (woman & child). person → house, person → child, person → child (kiss).

house. person → 7:40! person (running → airplane).

person → {door ✓ & airplane ✓}. person → suitcase,

person → taxi, person → taxi. person → ~~taxi~~, ~~taxi~~, ~~taxi~~

! person → taxi, person → taxi, stop sign, person → taxi, smiley.



MOBY-DICK;

OR,



BY

HERMAN MELVILLE.

AUTHOR OF

"TYPEE," "MOLLY," "REDUCED," "HARDY," "WHITE-JACKET"

ENGLISH: Call me Ishmael.

EMOJI: 📞👤🚤🐳👌

oh jesus own it don't ask take it
 a b c d
 oh damn open me touch it don't stop
 e f g h
 oh holy don't tell own me have me stay
 i j k l m
 don't wait oh God sell it don't go please
 n o p q r
 take me have it oh son come on fill me
 s t u v w
 don't beg buy me believe me
 x y z
 harder, now, here, hold on, do it, longer,
 A B C D E F
 touch, lick, more, grab on, squeeze, drink,
 G H I J K L
 hot, abide, love, look, see, feel, think,
 M N O P Q R S
 there, stay, come ah, delicious, holy, pray,
 T U V W X Y Z



Sade for Fonts Sake (free)

Oh Bishop X (truetype font, 2008)

I said deeper, there, higher, rise, sit,
The fox

Oh Blangis (truetype font, 2008)

Now I hit that, fuck your slit and hit your feet,
The fox

Oh Boy (truetype font, 2008)

now you so good *mmm* right there *glupp yaa*
The fox

Oh Doctor Ebing (truetype font, 2008)

I see unconscious ideal paranoia, trans-pedophilia,
The fox

Oh Gertrude (truetype font, 2008)

We know until blue, and me, with him petting in green
The fox

Sade for Fonts Sake example

(Sentence in the font *Arial*)

The quick brown fox is tasty.

(Same sentence in the Sade font *Oh Romans*)

The pussy knows, O
man becomes and not delicious, in soul
the slave, in sin, ye spiritual in flesh,
in evil ye the spirit and not new
in law, being new in law, dwells, praise be.

(Closeup of Sade font *Oh Romans*)

The pussy knows, O man

┌───┐ ┌───┐ ┌───┐ ┌───┐
T h e q

(Closeup of Sade font *Oh Bishop X*)

I said deeper, there, no—

┌───┐ ┌───┐ ┌───┐ ┌───┐
T h e q

(Closeup of Sade font *Oh Rosette*)

howling is me oh so cruel

┌───┐ ┌───┐ ┌───┐ ┌───┐
T h e q

Slowly I fuck here there, aah *hm yes yes hmm*
oooh next harder *hm yes yes so good so big*
glupp ah yes good boy *mmn hmm mmn hm*
come, knee and there, turn, fuck him and take
there and there and here there, fuck her and
suck your armpit, *O in sin, O in god in sex in sin,*
in evil being in flesh, O spiritual knows, and not
delicious, knows, oh lord and not in flesh, hm
don't, come, harder, rise, come, don't, stay,
shutup, don't, there, bend, stop, stay, *harder,*
there, stop, turn, shutup, turn, enough, mmor,
slsh ahhh oooh ahhh slsh mhn that and fuck
that and him here, *fuck take here there,*
that and fuck her and mmm yaa oh mm
hmm so good *ahhh good girl mmn mmm*



I am restrained as a nurse, a virgin, like
 a student, supple, moonlight, I am a music,
 a horse, ~~thunder~~ thunder, a trick, a whore,
 as lightning, tight, a tutor, sublime, visible as become
 wretched as a dolphin, passive as a mother, a bear,

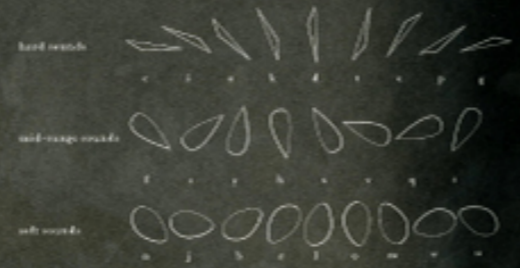
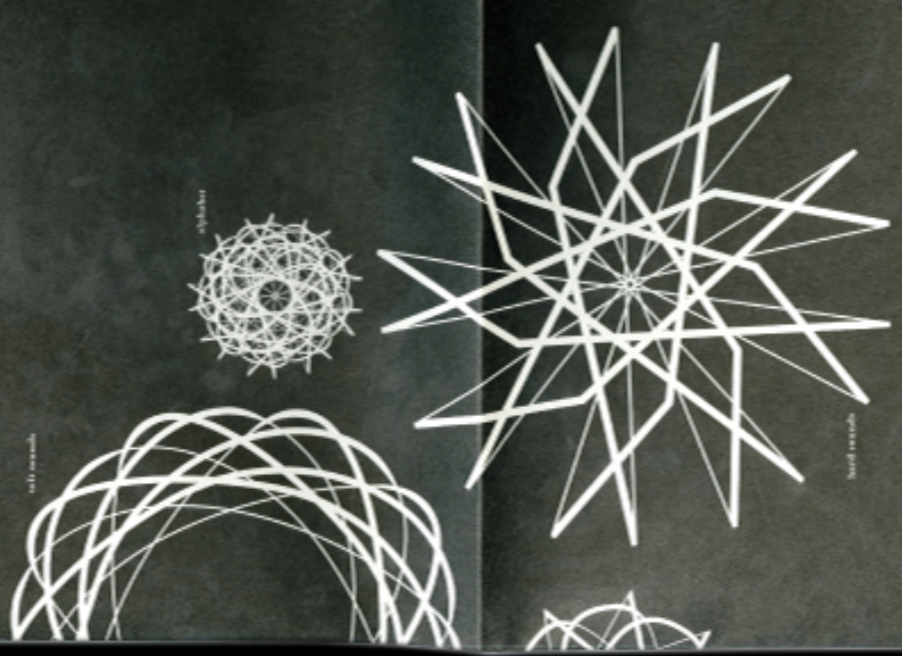
Me For you, For you, For you, Me For you, For you,
 For you, Finally For you, For you, For you, For you, For you,
 Me For you, For you, For you, For you, ← Cum now Me
 For you, For you, For you, For you, For you,

1-0 2-M 3-) 4-J 5-Ss 6-two
 7-bird 8-Cn 9-ice 0-gone

@ # \$ ^ & * = + -
 a turning, a gift.
 , .

What is the relationship between SOUND and SHAPE?

phono-type
☀ ● ● ●



phono-type is an experimental set of alphabetic characters that examines the relationship between sound and shape. It is based off a general experiment conducted by Wolfgang Kohler in the 1920's. Kohler asked participants to assign the names *fish* and *fish* to (1) shapes—most *fish*, and one *round*. The correlating majority of people responding assigned the names in the same way, prompting the idea that humans have an innate ability to make sound-shape correspondences. *See experiment description on page 100.*

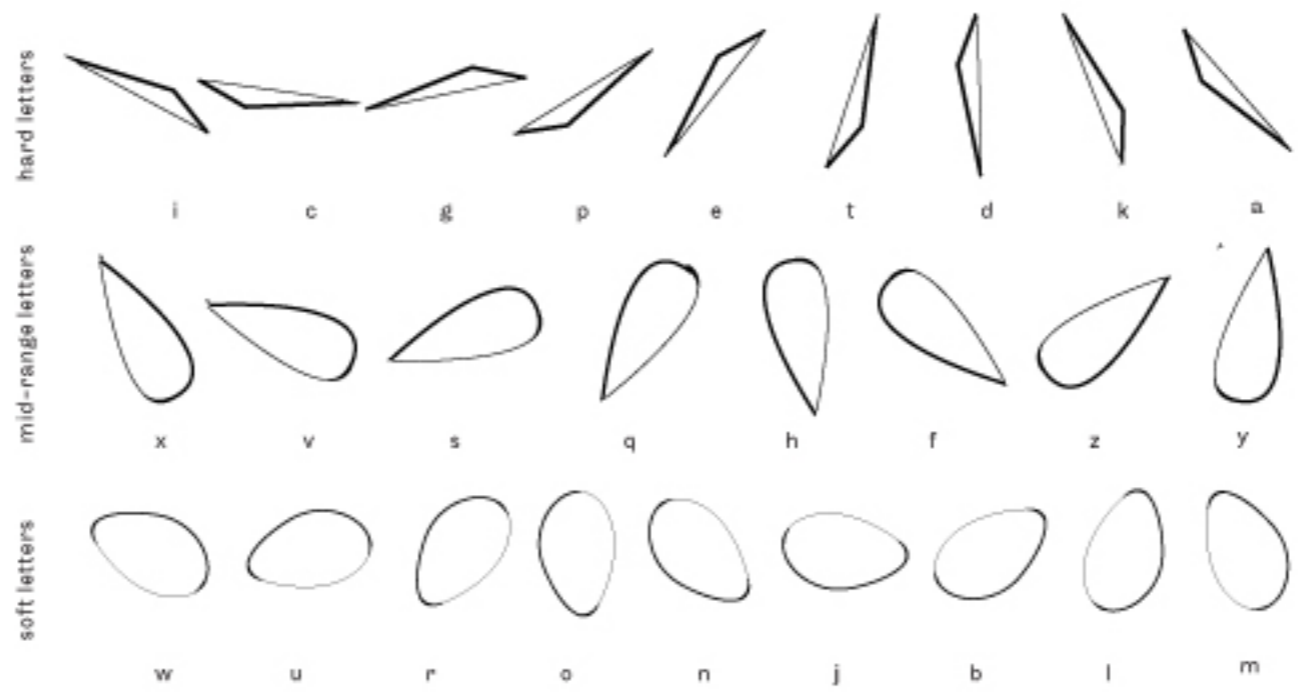




Takete



Maluma



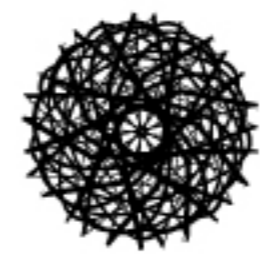
hard letters



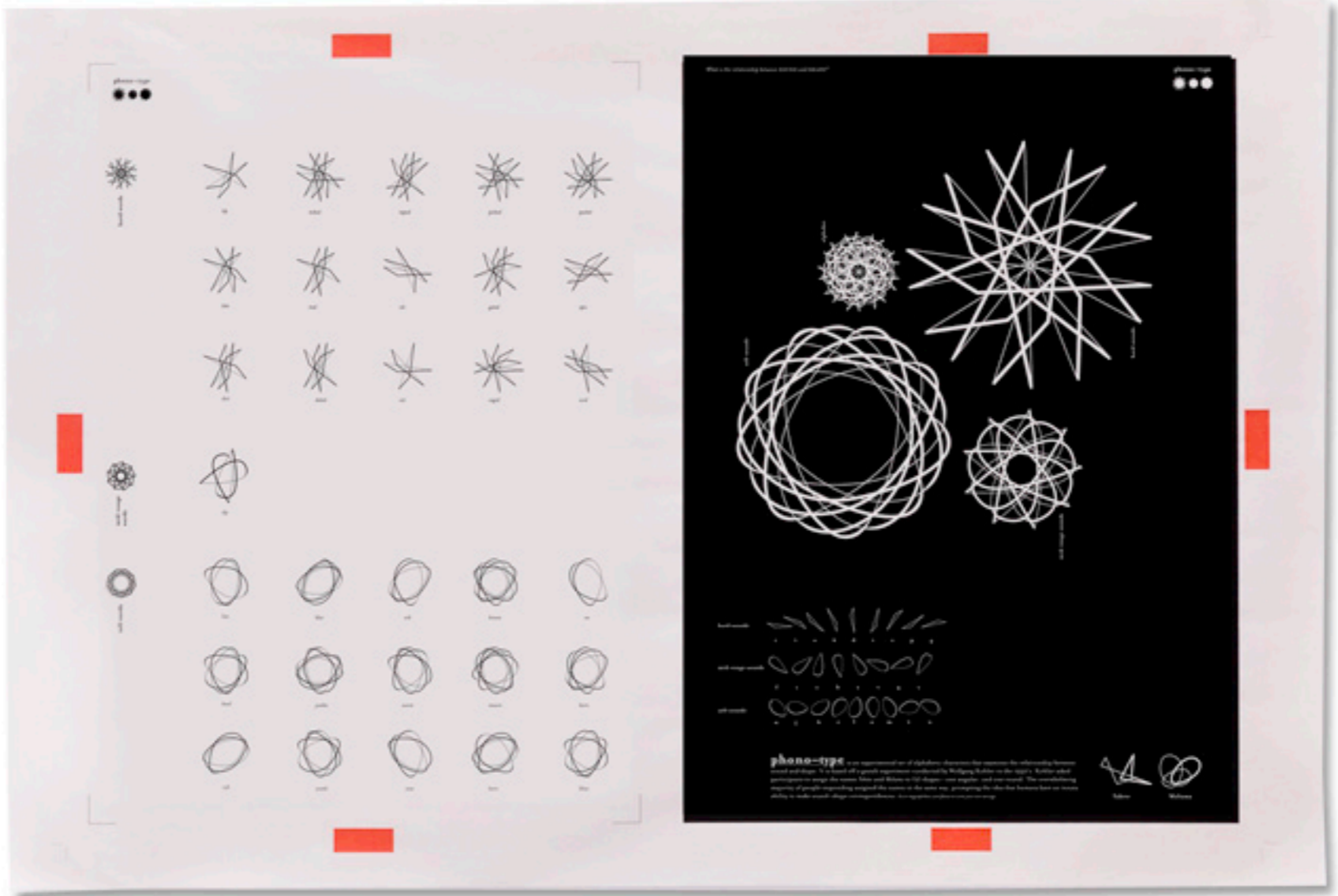
mid-range letters



soft letters



the alphabet



phono-type



hard words



up



nickel



taped



picket



picket



hire



lead



ink



genial



epic



dust



dust



out



angel



acid



$\delta^d \ g_p \ \delta^d \ q_b \ g_p \ \begin{matrix} p^g & q^g \\ q^b & q^b \\ \delta^d & \delta^d \end{matrix} \ e^c \ bb^g \ q^g \ q^g \ dd \ pp \ \delta^d \ g_p \text{---} \ \delta^d \ ee^g \ \begin{matrix} \text{||} & \text{||} \\ p & p \end{matrix} \ dd^g \ \delta^d \ p^g$
 $cc \ aa \ ee^g \ q^b - q^b \ cc \ g^c \ ee^g \ p^e \ bb^g \ b^g \ q^g \ p^g \ aa \ ff^g \ \begin{matrix} \text{||} & \text{||} \\ \text{||} & \text{||} \\ \text{||} & \text{||} \end{matrix} \ g_p \text{---} \ \delta^d \ e^d \ cb \ \begin{matrix} \text{||} & \text{||} \\ \text{||} & \text{||} \\ \text{||} & \text{||} \end{matrix} \ q^e \ ee^g \ bc^c \ d \ a^g$
 $q^b \ ee^g \ p^c \ ba^g \ g_p \ f_a \ ce \ ga^a \ b^g \ p^g \ ba^g \ f^g \ p^g \ a^g \ g_p \ e^g \ \delta^d \ ee^g \ dc^c \ ba \ q^b$
 $\text{---} \ q^b \ cc \ aa \ ee^g \ \begin{matrix} g^d & g^g \\ p^g & p^g \\ \delta^d & \delta^d \end{matrix} \ f^d \ ff^g \ \begin{matrix} \text{||} & \text{||} \\ \text{||} & \text{||} \\ \text{||} & \text{||} \end{matrix} \ p^g \text{---} \ \delta^d \ ee^c \ \begin{matrix} \text{||} & \text{||} \\ \text{||} & \text{||} \\ \text{||} & \text{||} \end{matrix} \ b^g \ bb^g \ q^g \ q^g \ a^g \ aa^g \ \begin{matrix} \text{||} & \text{||} \\ \text{||} & \text{||} \\ \text{||} & \text{||} \end{matrix} \ q^b \ \begin{matrix} p^g & p^g \\ q^b & q^b \\ \delta^d & \delta^d \end{matrix} \ \delta^d$
 $g_p \ g^g \ pp \ dd \ bb^g \ q^g \ p^g \ \begin{matrix} p^g & p^g \\ q^b & q^b \\ \delta^d & \delta^d \end{matrix} \ ce \ a^g \ p^g \ \delta^d \ p^g \text{---} \ \delta^d \ e^c \ a^g \ g_p \ ce^g \ d^g \ bb^g \ g_p \ d^g \ b^g \ q^g$
 $cc^a \ ce^g \ ee^g \ bb^g \ b^g \ q^g \ p^g \ a^g \ q^b \ cc^a \ ce^g \ ee^g \ bb^g \ b^g \ q^g \ p^g \ a^g \ q^b \ g_p \ ee^a \ ee^g \ ee^g$
 $d^g \ dd^g \ \delta^d \ q^g \ ce^g \ ee^g \ dd^g \ b^g \ q^g \ p^g \ ee^g \ \begin{matrix} \text{||} & \text{||} \\ \text{||} & \text{||} \\ \text{||} & \text{||} \end{matrix} \ d^g \ dd^g \ \delta^d \ q^g \ fa^c \ cc^g \ q^g \ q^g \ q^b \ \begin{matrix} p^g & p^g \\ q^b & q^b \\ \delta^d & \delta^d \end{matrix} \ \text{---} \ \begin{matrix} p^g & p^g \\ q^b & q^b \\ \delta^d & \delta^d \end{matrix} \ \text{---}$
 $\text{---} \ \begin{matrix} p^g & p^g \\ q^b & q^b \\ \delta^d & \delta^d \end{matrix} \ \delta^d \ g_p \ \delta^d \ q^b \ \begin{matrix} p^g & p^g \\ q^b & q^b \\ \delta^d & \delta^d \end{matrix} \ e^g \ bb^g \ q^g \ q^g \ dd^g \ \delta^d \ d^g \ \text{---} \ p^g$
 $ee^g \ ee^g \ \delta^d \ \delta^d \ \delta^d \ cc \ aa \ ee^g \ q^b - d^g \ cc^e \ ce^g \ ee^g \ bb^d \ b^g \ q^g \ q^g \ aa \ ff^g \ ee^g \ \begin{matrix} \text{||} & \text{||} \\ \text{||} & \text{||} \\ \text{||} & \text{||} \end{matrix} \ p^g \ \text{---}$
 $\delta^d \ cb^g \ a^g \ ee^g \ p^c \ q^e \ ee^g \ bc^c \ d \ a^g \ q^b \ cb^g \ a^g \ ee^g \ p^c \ g_p \ f_a \ ce \ ga^a \ b^g \ p^g \ ba^g \ f^g \ p^g \ a^g$
 $e^g \ \delta^d \ dc^c \ ba^g \ ee^g \ q^b - q^b \ ee^g \ cc \ aa \ g^d \ g^g \ p^g \ p^g \ a^g \ \delta^d \ ff^g \ g_p - q^b \ ee^c \ \begin{matrix} \text{||} & \text{||} \\ \text{||} & \text{||} \\ \text{||} & \text{||} \end{matrix}$
 $g^d \ g^g \ p^g \ p^g \ \begin{matrix} \text{||} & \text{||} \\ \text{||} & \text{||} \\ \text{||} & \text{||} \end{matrix} \ a^g \ a^g \ b^g \ \begin{matrix} p^g & p^g \\ q^b & q^b \\ \delta^d & \delta^d \end{matrix} \ b^g \ p^g \ pp^g \ dd \ bb^g \ q^g \ p^g \ \begin{matrix} p^g & p^g \\ q^b & q^b \\ \delta^d & \delta^d \end{matrix} \ e^c \ b^g \ p^g \ \delta^d \ p^g$

















